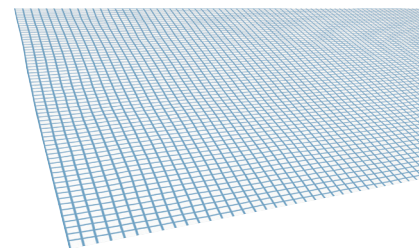
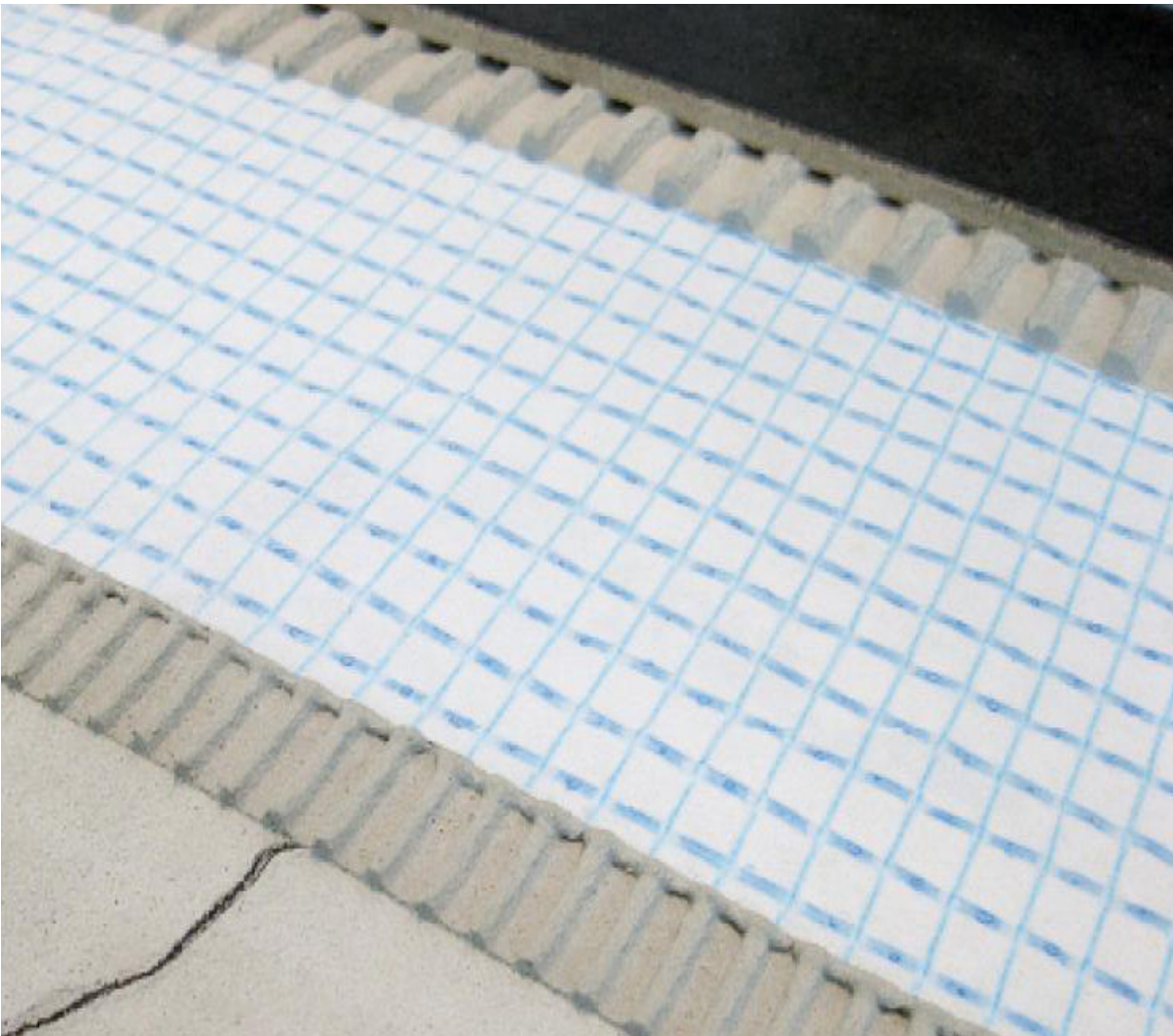


**BLANKE**

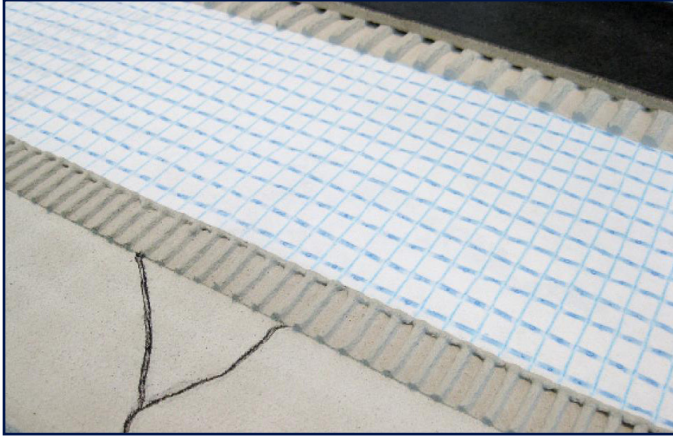


## **BLANKE SECUMAT**

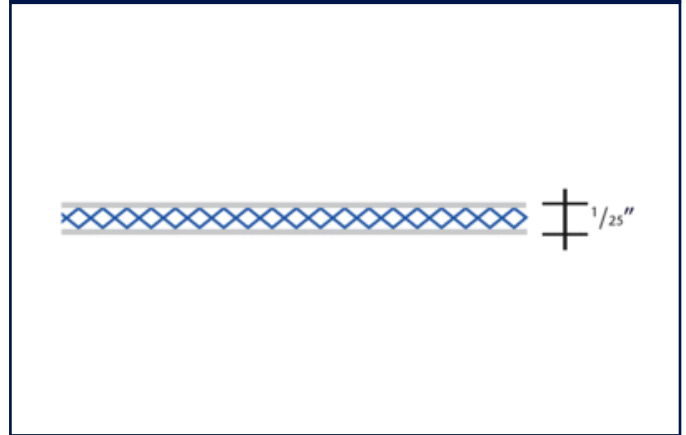
- > Tear proof, thin rolled uncoupling underlayment
- > Low elevation
- > Easy to cut and install
- > Use less thinset than other uncoupling products
- > Provides uncoupling crack isolation properties

# BLANKE

## BLANKE SECUMAT



## BLANKE SECUMAT - Diagram

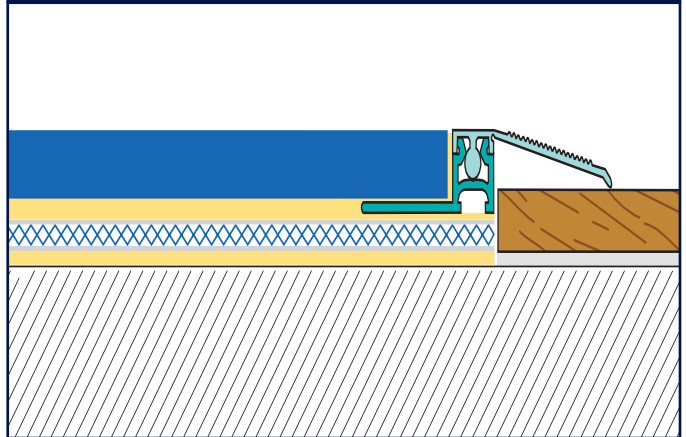


### Product features:

BLANKE SECUMAT is a tear-proof rolled uncoupling underlayment that provides a secure bonding surface for ceramic tile and natural stone installations on both interior floors and walls. The BLANKE SECUMAT also provides crack isolation protection that helps prevent damage to the tile covering caused by lateral substrate movement. This light weight, easy- to install underlayment features low elevation and requires less thinset than other rolled uncoupling products. The BLANKE SECUMAT is an ideal underlayment for both new installations and for renovations over existing floor coverings.

- Low elevation
- Easy to cut and install
- Uses less thinset than other uncoupling products
- Provides uncoupling crack isolation properties
- Approved for wood and cement substrates
- Approved for use of modified thinset with porcelain tile
- Approved for all tile sizes including mosaics

## BLANKE SECUMAT - Installation



## BLANKE SECUMAT - Technical Data

Material:	Reinforced fiberglass mesh embedded between two layers of polyester fabric.
Thickness:	0.9 mm (nominal 1/25")
Fabric material:	Polypropylene fleece
Size:	1 roll 3.28' width x 164' length (1m x 50 m) 538 sq.ft
Part Number:	758-904

For more information on technical data and installation:  
[www.blankecorp.com](http://www.blankecorp.com)

